



LIGHT & SHADE

Monthly Newsletter of the Macquarie Towns Arts Society Inc.

October 2022

Volume 30 Issue 9

THE SOCIETY MEETS ON
2ND TUESDAY OF EACH MONTH

PO Box 1058 Richmond NSW 2753
info@mtas.com.au
www.mtas.com.au

President:	Satya Morrison	0483 895 098
Secretary:	Pat Bakarich	0415 200 446
Treasurer:	Sheilana Prosper	0473 806 946

from the President

Spring has sprung and with it our AGM brought a new committee, followed by a very interesting talk by Sue Kennedy on Art Therapy.

A big thank you to those who served on our Committee, and to those who have stepped up for the new year. The tireless efforts of our volunteer committee has seen us successfully navigate through challenging times.

A heartfelt thank you to Kym Morris who has stepped down from President and into Vice President. We are grateful for Kym's work in the position and I am also grateful to Kym and our committee of long-standing members to support me as I go into the role of President.

Thank you to Narelle Ward who steps down from Vice President and continues as our Wednesday Open Day Art Group Co-ordinator along with Sharron Whittington, who we also thank for continuing.

Thank you to Annmaree Mitchell who will step out of Functions Officer, but continue as our supper person. Mark Wilson with Sheila Sharp will fill the role as a shared position to ensure we have excellent artists joining us in the future for our demonstration meetings and workshops.

Thank you to those taking other positions. Maryanne Jones has kindly agreed to continue until the end of the year as our Gallery Manager for Musson Lane and also take part in our Exhibition Management Team.

Our Treasurer Sheilana Prosper and Secretary Pat Bakarich will both continue. Thank you all!

The Society has had a great opportunity with the Mus-

son Lane venue having a more central location to meet and exhibit, as well as store our equipment. Please continue to spread the word that we need a new home. Any ideas, suggestions or offers are very welcome. Please talk to our committee.

Please make use of Musson Lane while we have it. We plan to have a Garage Sale to assist with our move, plus a Christmas Sale in late November early December.

The Hawkesbury Art Fair opened on 23rd September with great attendance. The exhibition will continue until 23rd October. Be sure to visit the Regional Gallery in Windsor to view this wonderful show of our local artists' work.

We are excited to have our Spring Affair Exhibition coming up 21st - 23rd October and preparations are well underway for this event. Make sure to have this in your calendar, bring your family and friends.

Other activities this month include our Children's School Holiday Workshops and our Monthly Meeting 11th October with Sally Thompson 'Florals in Acrylic'.

We have a lot to look forward to with our Society and I am honoured to fill this role, following some great artists who have been in the position before me. I will do my very best to support our members, with our dedicated committee, to see MTAS thrive into the future.

Keep up your creativity,
Satya

Musson Lane Gallery

The feature artist for September was Yvonne West with a beautiful display of her work showing. August saw a couple of painting sales and a slight increase of visitors over the month, up by 30% overall. Josephine Blue is feature artist for October with Sheila Sharp in November. The gallery will be closing before Christmas, and members will be advised on the details regarding collection of works.

Maryanne Jones 0428 441 437

Gallery open every Saturday



We are adhering to COVID practices.
Mask wearing is optional.

DEMONSTRATION

Tuesday 11th October 2022 7.30pm

Stan Stevens Studio, Deerubbin Centre,
Hawkesbury Cultural Precinct, George St, Windsor

The basement carpark closes at 7.45pm

Sally Thompson 'Florals in Acrylic'

Sally is known for her ability to see what the eye may miss at first glance. Sally provides us with glimpses of what we are missing, the chorus-line she calls it, while we focus on the star.

In her day to day life, Sally builds systems and manages sophisticated budgets as a finance officer and web developer. She is also a competitive ballroom dancer and has learned complex choreography in a variety of styles.

Not surprisingly, Sally brought the devil in the detail to her creativity and exploits the colour



and the structure of interlocking shapes to bring a fresh perspective to the movement and colour that nature presents.

For Sally, it's the music and the chorus-line that take equal centre stage as the prima donna and soloist and her work takes the viewer on the dance of a lifetime.

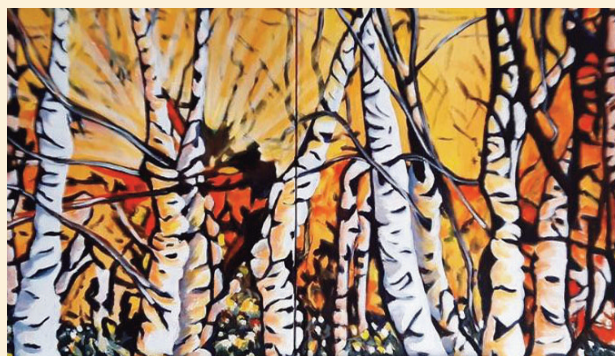
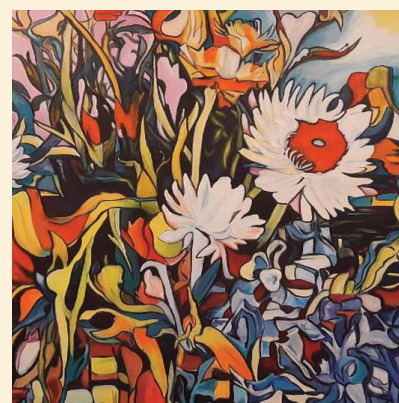
To see more about Sally's work you can view here:

Salt Gallery Designs

Instagram: https://www.instagram.com/salt_gallery_designs/

Facebook: <https://www.facebook.com/SaltGalleryDesigns>

Website: <https://www.saltgallerydesigns.com.au/>



CovidSafe practises will be in place or you can attend via Zoom Please use this link: info@mtas.com.au

CASS REPORT

It's getting closer to the Art at the Top and I'm very excited to be participating. If you haven't yet booked please check the website for workshops which are full. The brochure and forms for available workshops are on www.combinedartsocieties.com

The Art of Sydney is progressing in the planning and entry forms will be available soon. Check the website for updates.

Cheers,
Kym

*"You must learn from
the mistakes of others.*

*You can't possibly live long enough
to make them all yourself."*

Sam Levenson

FOHacRG Inc.

Exhibition - 'Impact - The Hawkesbury River'
28th - 30th October, Stan Stevens Studio,
Deeubbin Centre, Windsor.
Contact Margaret 4577 4440 for entry details.

There will be a fund raising Yard Sale at
526 George St, Sth Windsor in mid October.
Donations of pre-loved items,
furniture, books, plants, etc most appreciated.
Phone Margaret 45774440.

FIELD DAY

For venue or information, please ring Tony White
0410 624 918 or NAS website for further information
<http://nepeanartsociety.wildapricot.org/plein-air-painting-group>

WELCOME TO NEW MEMBERS

Janelle Wymer Evelyn Cullen Lyn Carr
Joan Morrison-Swan Roger Kelly Sue Casey

CLASSES

MTAS CHILDREN'S AFTER SCHOOL ART CLASSES

Teacher Marcella Pyke

Term 4 2022

Begins 17th & 19th October

**Term fees of \$96 paid via direct deposit to MTAS,
Cash or by Creative Kids Vouchers.**

ENROLMENTS ESSENTIAL

Richmond Art Supplies
328 Windsor St, Richmond (next to Brynnorms)
Ph: Deidre 0412 979 731

LIFE DRAWING GROUP

MTAS Life Drawing Group meets

3rd Tuesday each month

7pm - 9pm \$12. Model, easels & supper.

BYO drawing materials.

Tuesday 18th October

Richmond Art Supplies

328 Windsor St, Richmond (next to Brynnorms)

Ph: Deidre 0412 979 731

PORTRAIT GROUP

MTAS Portrait Group meets 2nd Saturday each month,
1- 4pm, \$12. Model, easels & afternoon tea provided.

BYO Painting/Drawing materials.

Not on in October

Richmond Art Supplies

328 Windsor St, Richmond (next to Brynnorms)

Ph: Deidre 0412 979 731

Hawkesbury Community Arts Workshop

Our social group Saturdays have been changed to
the 3rd Saturday at 1pm. – printmaking, pottery,
painting, crafts. \$5 if not an HCAW member.

There is a new pottery class and we are hoping
that some of the classes for People with Disabilities
will recommence.

Contact our President, Malcolm on hcawork-
shop@yahoo.com

The building has a QR code and COVID safe
procedures will be followed.

Enquiries - hcaworkshop@yahoo.com

Hawkesbury Community Arts Workshop

PO box 522, Richmond NSW 2753

RICHMOND ART SUPPLIES

5% DISCOUNT FOR MTAS MEMBERS

QUALITY FINE ART MATERIALS
CLASSES & GALLERY

Weekly Classes

- Oils, Drawing, Acrylics Watercolours & Pastels 2hrs \$20
- Friday All media Class 3hrs \$25
- Monthly Art Groups \$10
- Portraits - 2nd Saturday \$12
- Local Artists Gallery \$2 for 4 months 20% commission on painting sales

Deidre Morrison 0412 979 731
Satya Morrison 0405 337 652

328 Windsor St, Richmond
(Next to Brynnorms) 4578 3555



**The largest range of
Art Supplies and framing in
Australia under one roof.**

**With over 17,000
product lines**

For our complete catalogue visit our
web site www.artscene.com.au

Place an order by phone, fax, email or
visit us at (the rear of)
912-914 Victoria Road, West Ryde 2114
Phone 02 9807 6900 Fax 02 9809 6548
email is sales@artscene.com.au



THE PICTURE FRAMING WAREHOUSE
specialising in conservation framing of
all artwork

**•READYMADE FRAMES
AND KITS**

computerised mat cutter for any
intricate mat cutting needs or desires

Ben Baxter

Unit 1, 129 Russell Street,
Emu Plains 2750

Ph: (02) 4735 8021

E: mondtex@gmail.com

Discount for Art Society Members

ArtSup

**Picture Framing
Fine Art Printing
Suppliers of Art
& Graphic Materials**

Cnr Manning Street & Second Ave.,
Kingswood
near University of Western Sydney

Open 5 & 1/2 days

Phone: (02) 4736 5866 Fax: (02) 4736 2640

**Little River
art
Studios**

Bracken Stud. Grose Wold
Artist Workshops

Enjoy a One day or Weekend
workshop with Experienced Art
Tutors on this beautiful,
historical horse property.
Join the mailing list today to find
out who's teaching and when!

Jeanette Starr 0414 761308

www.littleriverartstudios.com.au

brackenstud@iprimus.com.au

FRIDAY ART CLASS

with Deidre Morrison
All media

*Work at your own pace
in relaxed, friendly
atmosphere.*

Every Friday 12.30 - 3.30pm.
\$25 p.w.

Richmond Art Supplies
328 Windsor St, Richmond
Ph: Deidre 0412 979 731

MTAS SCHOOL HOLIDAY ART & CRAFT WORKSHOPS

for kids 5 - 15yrs

26th September - 7th October, 2022

Include Drawing, Painting, Pottery, Decorating
Treasure Boxes, Tie Dyed T-shirts, Polymer Clay
Dragons, Jewellery and more. Cost: \$15 per 2hr
class with COVID safe hygiene practices.

at Richmond Art Supplies

328 Windsor St, Richmond (next to Brynnorms)

BOOKINGS ESSENTIAL

Ph: Deidre 0412 979 731

EXHIBITIONS

Hawkesbury Regional Gallery & Museum

Ph 4560 4441, closed Tuesday

'Hawkesbury Art Fair'

23rd September - 23rd October

Art Gallery NSW

Open with Covid conditions.

The Gallery is open every day from

10am to 5pm, and open late until 9pm on

Wednesdays.

Purple Noon

606 Terrace Rd, Freemans Reach Ph: 4579 6579

CLOSED: Monday/Tuesday/ Wednesday (by appointment)

OPEN 10:00am - 5:00pm: Thursday/Friday

OPEN 11:00am - 4:00pm: Saturday/Sunday

robyn@purplenoongallery.com.au

Online trading: 24/7...

and follow @purplenoongallery on Instagram

'Winterly,' Melanie Vugich

I am thrilled to be presenting

Winterly, an exhibition of

'tablescapes' - paintings by popular

Sydney artist Melanie Vugich.

Please join us for drinks with the

artist as we open the show and

enjoy viewing this exquisite body

of new work at the gallery on

Saturday 8th October 3:00pm -

5:00pm.

Melanie and I are looking forward

to welcoming guests for drinks

and canapés.

Enjoy the art ... meet and chat

with Melanie about her colour

filled, contemporary still life paintings.

Don't worry if you can't attend -

the opening (including video and

discussion) will all be online at

6:00pm.

The Village Kitchen Kurrajong

83 Old Bells Line of Road Kurrajong Village

Ph:4573 0988

HCAW 19th August to 23rd September

Nina Paine 23rd September - 28th October

Annmaree Mitchell 'Unframed' 28th October -

1st December



PATONGA BAKEHOUSE GALLERY

THE ART OF JOCELYN MAUGHAN OAM

0417 441 938 - Free help and advice

Email: jocelyn.maughan@yahoo.com.au

EVENTS INFORMATION FROM OTHER GROUPS

BigCi Environmental Awards 2022

Australian and International artists from various fields - visual art, installation, multimedia, performance, literature, music, photography, film making, curating - are invited to submit entries for the BigCi Environmental Awards 2022.

Two Winners of the Awards will each receive four free weeks of BigCi residency and \$4,000 prize money.

The deadline for submissions is 4th of November 2022.

Winners will be announced on 26th of November 2022.

There is an entry fee of \$35, which must be paid at the time of sending the submission.

Entry fees are not refundable.

Rae Bolotin

Artistic Director, BigCi

www.bigci.org

ART Travel Adventures

info@arttraveladventures.com.au

Purple Noon Gallery

Beautiful Art, Sculpture & Framing

An enchanting sandstone gallery and garden with a relaxed and rustic ambience.

Contemporary and fine art, sculpture, gifts and jewellery.

Also leaders for all picture framing requirements.

606 Terrace Rd, Freemans Reach 02 4579 6579

purplenoongallery.com.au



Feature Artist of the Month

OCTOBER



JOSEPHINE BLUE

be sure to visit
the Musson Lane Gallery
to view her outstanding work

The Hawkesbury Art Fair opened on 23rd September with a great attendance, and the exhibition will continue until 23rd October. This year we have Mark Wilson, Maryanne Jones, Virginia Wheatley, Sue Gasser, Melody Tallon, Sue Rea and Elaine Foulsham representing MTAS. Be sure to visit the Regional Gallery in Windsor to view this wonderful show of our local artists' work.

