



LIGHT & SHADE

Monthly Newsletter of the Macquarie Towns Arts Society Inc.

November 2022

Volume 30 Issue 10

PO Box 1058 Richmond NSW 2753
info@mtas.com.au
www.mtas.com.au

THE SOCIETY MEETS ON
2ND TUESDAY OF EACH MONTH

President:	Satya Morrison	0413 809 685
Secretary:	Pat Bakarich	0415 200 446
Treasurer:	Sheilana Prosper	0473 806 946

from the President

October certainly has been a busy month with The Hawkesbury Art Fair looking great this year, our wonderful Spring Affair Exhibition that was enjoyed by many with some good results having 14 paintings sold and a lot of our lovely craft also. We enjoyed our demo meeting with Sally Thompson's beautiful Acrylic flowers, and we have started to prepare Musson Lane for our move by sorting our library, art materials and other equipment with some up for sale. You can visit on Saturdays or our Open Wednesdays 2nd & 16th Nov, to look and purchase these.

In November we look forward to Melissa Read Devine demonstrating Printmaking at our Monthly Meeting Nov 8th and we are preparing for the end of year wind up with

our Xmas sale at Musson Lane date TBA and then our Xmas party on December 13th.

We are still on the hunt for a new home so please do keep coming up with ideas and spreading the word. A farewell to Musson Lane afternoon tea is planned for November 20th, 2pm to 5pm, tea, coffee and scones will be supplied plus 'Bring a plate' & BYO.

With a lot going on to finish up the year, keep up your art and whether you are a hobbyist, art appreciator or professional, try to do something creative every day.

Look forward to seeing you at our events,
Satya



*'Richmond Park' won the People's Choice Award
Sheila Sharp with People's Choice artist,
Evelyn Cullen*

RAFFLE \$2 PER TICKET



**'Farm Shed' Oil painting by Gloria Galvin
On display Richmond Art Supplies and MTAS
Gallery Musson Lane Richmond**

Drawn Tuesday 13th December 2022

Josephine Blue provided another wonderful Feature Artist display for October with a selection of her mixed media artworks. These will be taken down shortly, and Sheila Sharp as November Feature Artist is going to hang a large selection of her printed pieces, being mainly etchings or lino prints which are both media we don't often see.

We are counting down towards the closure of Musson Lane Gallery when our lease finishes on 31st December 2022. We still have a lot to do prior to this happening.

SALE

You should all have received notification that we are disposing of a lot of art supplies (brushes, pastels, paints, paper, pencils etc), used frames (some very large too), many beautiful and helpful art books and an awful lot of art magazines (going back many years). These are out on display at Musson Lane Gallery for sale at very nominal prices and where there is no price a token gold coin will do.

Please, please, come in and pick up a few true bargains as we really want people who would genuinely appreciate them to get these items, rather than having to dispose of them otherwise. These items are already on display and available on Open Wednesdays and on Saturdays.

In addition to this we have some larger items that are surplus to our requirements and we don't want to have to move them into storage if we don't have to. Some items were bought by MTAS in years gone by, but a lot were donated too. These include:

- One single divan bed
- One electric Royale recliner chair
- A laminated 2 door cupboard with external lock
- One pine credenza, 3 door and 3 drawers
- One pine corner desk with 2 drawers, 2 doors and keyboard drawer
- One small round occasional table
- 2 brown painted wooden bookshelves
- 4 cloth covered standing screens (in need of recovering)
- One 3 drawer filing cabinet
- One semi-circle hall table
- One small wooden telephone table
- Low blonde laminate 2 door cupboard 90x45x72cm
- One small timber chest of 4 drawers
- Two rotating wire card stands on wheels

- One glass top and front shop bench
- One large glass display cabinet on wheels 187x170x94cm

This is by no means an exhaustive list as there are other items available.

All of these items have had former lives but are still very serviceable so don't overlook the opportunity to pick up a bargain. All genuine offers will be considered. Contact me direct via my mobile or make an offer at the Gallery. REMEMBER: First in best dressed!

Our last trading day will be SATURDAY 3RD DECEMBER and FINAL PICK UP of ART and CRAFT will be SUNDAY 4TH DECEMBER from 10am to 2pm. Everything must go as we are unable to store anyone's works. So, if you have something in the gallery now, come in on 4th to collect it.

If any members have difficulty with this timeframe you must contact me prior to this to make another arrangement. December is traditionally such a busy festive season that I hope everyone would bear that in mind and assist the Committee with the process of moving out of Musson Lane with a minimum of difficulty.

A FAREWELL TO MUSSON LANE ALL MEMBERS, FAMILY & FRIENDS ARE WELCOME

This is an opportunity to acknowledge that after 60 years, MTAS is beginning yet another phase in its evolution. This afternoon tea/get together has been arranged for Sunday 20th November from 2-5pm at Musson Lane. Please bring a plate (sweet or savoury), and your own drinks, either soft or alcoholic. Tea and coffee will be provided.

You will have an opportunity to check out what is left on sale and to also make offers on any of the furniture listed above.

Maryanne Jones
Gallery Manager 0428 441 437

We are adhering to COVID practices.
Mask wearing is optional.



DEMONSTRATION

Tuesday 8th November 2022 7.30pm
Stan Stevens Studio, Deerubbin Centre,
Hawkesbury Cultural Precinct, George St, Windsor
The basement carpark closes at 7.45pm

Melissa Reid-Devine 'Printmaking'

Melissa has studied & practised printmaking and painting continuously for the past 21 years and is a recipient of many prizes and awards. Her artwork is part of many private and public collections around the world.



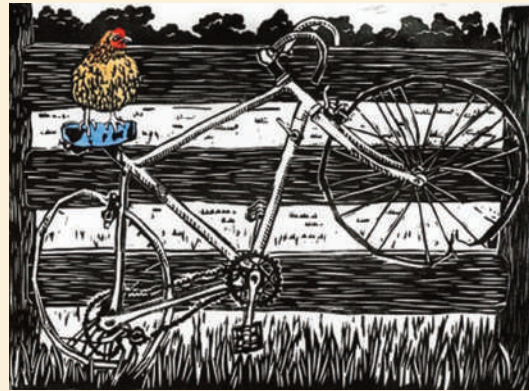
Living in rural Sydney overlooking the Hawkesbury River, Melissa's work ranges between vibrant interpretations of her local landscape to intricate wood & linocuts. Her combination of quirkiness and calm blend to create works with a strong spiritual base.

She is an Associate of the Royal Art Society of NSW, and also travels around the world to teach art enrichment workshops.

You can see more of
Melissa's work here:
www.readdevine.com
www.instagram.com/readdevine
www.facebook.com/readdevineartist



Website: <https://www.saltgallerydesigns.com.au/>



CovidSafe practises will be in place or you can attend via Zoom. Please email for link: info@mtas.com.au

CASS REPORT

Unfortunately - and it's difficult to start with that word - the Australian National Maritime Museum notified CASS that the Terrace Room where we usually hold the Art of Sydney and that we had booked would not be available due to renovation work having been scheduled. At this time the CASS committee is working hard to find an alternate venue and will also look at an online event as we did during COVID if possible. Our member Delegates have sprung into action and we have enquiries with several venues and are waiting for their response.

Art at the Top is happening at the end of November - if you haven't put your name down for a workshop with our fantastic group of tutors, it's not too late and I hope to see many of you there. Details on the CASS website at combinedartsocieties.com under the Events tab.

Cheers,
Kym

November 2022 Volume 30 Issue 10 page 3

FOHacRG Inc.

An Exhibition titled "The Colours of Asia" will be held on 24th - 28th November in the Stan Stevens Studio, Deerubbin Centre, Windsor.

On 27th November, at the exhibition, a luncheon will be held as the FOHACARG Christmas gathering.

Phone Margaret 45774440.

FIELD DAY

For venue or information, please ring Tony White 0410 624 918 or NAS website for further information <http://nepeanartsociety.wildapricot.org/plein-air-painting-group>

CLASSES

MTAS CHILDREN'S AFTER SCHOOL ART CLASSES

Teacher Marcella Pyke

Term 4 2022

17th & 19th October - 5th December

**Term fees of \$96 paid via direct deposit to MTAS,
Cash or by Creative Kids Vouchers.**

ENROLMENTS ESSENTIAL

Richmond Art Supplies
328 Windsor St, Richmond (next to Brynnorms)
Ph: Deidre 0412 979 731

LIFE DRAWING GROUP

MTAS Life Drawing Group meets

3rd Tuesday each month

7pm - 9pm \$12. Model, easels & supper.

BYO drawing materials.

Tuesday 15th November

Richmond Art Supplies
328 Windsor St, Richmond (next to Brynnorms)
Ph: Deidre 0412 979 731

PORTRAIT GROUP

MTAS Portrait Group meets 2nd Saturday each month,
1- 4pm, \$12. Model, easels & afternoon tea provided.

BYO Painting/Drawing materials.

Saturday 12th November

Richmond Art Supplies
328 Windsor St, Richmond (next to Brynnorms)
Ph: Deidre 0412 979 731

Hawkesbury Community Arts Workshop

The Piggery Studios are open for viewing and sales on the 1st Saturday each month. See the work of Marion Wilcox, Malcolm Robertson, Kym Morris, Jennie Lloyd and Sharron Whittington and Shelley. A Social group meet at K13 on Saturday 19th November. Free to HCAW members or \$5 for others. Work on your own project – printing, painting, sewing, pottery Coffee and biscuits available. Our next committee meeting will be on Monday 14th November at 4pm in K13. The building has a QR code and COVID safe procedures will be followed.

Enquiries - hcaworkshop@yahoo.com
Hawkesbury Community Arts Workshop
PO box 522, Richmond NSW 2753

RICHMOND ART SUPPLIES

5% DISCOUNT FOR MTAS MEMBERS

QUALITY FINE ART MATERIALS
CLASSES & GALLERY
Weekly Classes

- Oils, Drawing, Acrylics Watercolours & Pastels 2hrs \$20
- Friday All media Class 3hrs \$25
- Monthly Art Groups \$10
- Portraits - 2nd Saturday \$12
- Local Artists Gallery \$2 for 4 months 20% commission on painting sales

Deidre Morrison 0412 979 731
Satya Morrison 0405 337 652

328 Windsor St, Richmond
(Next to Brynnorms) 4578 3555



**The largest range of
Art Supplies and framing in
Australia under one roof.**

**With over 17,000
product lines**

For our complete catalogue visit our
web site www.artscene.com.au

Place an order by phone, fax, email or
visit us at (the rear of)
912-914 Victoria Road, West Ryde 2114
Phone 02 9807 6900 Fax 02 9809 6548
email is sales@artscene.com.au



THE PICTURE FRAMING WAREHOUSE
specialising in conservation framing of
all artwork

**•READYMADE FRAMES
AND KITS**

computerised mat cutter for any
intricate mat cutting needs or desires

Ben Baxter

Unit 1, 129 Russell Street,
Emu Plains 2750

Ph: (02) 4735 8021

E: mondtex@gmail.com

Discount for Art Society Members

ArtSup

**Picture Framing
Fine Art Printing
Suppliers of Art
& Graphic Materials**

Cnr Manning Street & Second Ave.,
Kingswood
near University of Western Sydney

Open 5 & 1/2 days

Phone: (02) 4736 5866 Fax: (02) 4736 2640



FRIDAY ART CLASS

with Deidre Morrison
All media

*Work at your own pace
in relaxed, friendly
atmosphere.*

Every Friday 12.30 - 3.30pm.
\$25 p.w.

Richmond Art Supplies
328 Windsor St, Richmond
Ph: Deidre 0412 979 731

FAREWELL TO MUSSON LANE

Afternoon Tea

**Sunday 20th November
2-5pm**



Tea Coffee, Fruit punch available,
BYO anything else.

Bring a (disposable) plate of food to add
to the feast.

A chance to purchase art products, books
and Art and Craft from the Gallery.

SPRING AFFAIR EXHIBITION

The Society's Spring Exhibition was a big success! The high standard of artworks shown caused the Judge, Dario Falzon, much consideration to reach his decisions on the winners. Look elsewhere in this Newsletter for a full list of artists who placed well.

His Best in Show was part of the Printmaking section, a beautiful piece titled "Young Nude" by new member, Joan Morrison-Swan. His comment was "an incredible piece, whose linework evokes an emotional weight. There is a humanity here, in the rendering of the subject matter, that holds you and commands engagement. Well done!"

The exhibition was opened on Friday night by Danielle Thompson, President of Hawkesbury Valley Toastmasters, and was well attended by around 100 people and children. Children's Awards were presented by Deidre Morrison and tutor,



Above: Opener, Danielle Thompson



Above: Sue Kennedy, Pat Bakarich and Danielle Thompson



Left: Jeanette Starr and Kathy Shelley



Above: Deidre Morrison, Astrid & George Bradshaw

Left: Kym Morris and Sharron Whittington

Below: Award winners in the Children's Art

Marcella Pyke to the students who show a very promising future in their art journeys.

Adult awards were presented by Opener, Danielle and new President, Satya Morrison, with many smiles and photos taken.

There was some wonderful craft on show with pottery, jewellery, resin work, clay resin

products, greeting cards and wool products.

Sales were good with 14 paintings sold and many craft pieces purchased. Attendance on both days of the weekend numbers about 100 each day and there were many visitors lingering for a cup of tea and a snack, chatting and generally catching up with friends.

The venue and hanging looked spectacular complemented beautifully by some grand flower arrangements. Well done MTAS!

Thank you to the Committee and

Members of MTAS who made this high quality art exhibition possible by their efforts and dedication to arts and crafts in the Hawkesbury.



SPRING AFFAIR EXHIBITION



Above: Sheila Sharp & President Satya Morrison

Left: Joan Morrison-Swan

Below right: Marcella Pyke & President Satya Morrison

Below: Evelyn Cullen, Kym Morris & President Satya Morrison



Above: Yvonne West & President Satya Morrison

Below: Patricia Latta & President Satya Morrison



SPRING AFFAIR AWARDS

Best In Show

Joan Morrison-Swan 'Young Nude'

Oil

1st Jeanette Starr 'Roy'

HC Evelyn Cullen 'Richmond Park'

HC Gloria Galvin 'Reflections'

C Gloria Galvin 'Heading Home'

C Guenter Barth 'Capertee Valley'

C Jackie Flower 'To The East'

C Sue Casey 'Flamingos'

Watercolour

1st Gloria Galvin 'The Cow Shed'

HC Jeff Hunter 'Reflections'

HC Gloria Galvin 'The River'

C Rosalie Neef 'Ebenezer Winery'

C Jeff Hunter 'Aloft'

Pastel

1st Patricia Latta 'Afternoon Light'

HC Jeanette Starr 'Lord Howe'

C Deidre Morrison 'Red Gum Blossoms'

Drawing

1st Jeanette Starr 'Koala'

HC Beth Gibbeson 'Berlin Cathedral Angels 2'

C Narelle Ward 'Hawkesbury Hosp. circa 1910'

Contemporary

1st Joy Myers Creed 'Lindsay'

HC Marcella Pyke 'Solar Flare'

C Janelle Wymer 'Adventurine'

Printmaking

1st Joy Myers Creed 'Visions 3'

HC Sheila Sharp 'Macquarie Arms'

C Jan Latta 'Energy Lines'

Small Paintings

1st Patricia Latta 'All Eyes'

HC Yvonne West 'Down Bendigo Way'

C Deidre Morrison 'Heritage Cottage, Richmond'

People's Choice

Evelyn Cullen 'Richmond Park'

Children's Art Classes

Observational Drawing

1st Jarrah Shoab, 2nd Ayla Hart, 3rd Sienna Morssink, H.C. Paringhya Galhena, C. Isabella Saunders

Other Art Works - 1st Matilda Berry, 2nd Bailey Webb, 3rd Adelaide Packett, H.C. Evelyn Agius-Gilbert, C. Ruby Gibson

All children who participated received a certificate.

EXHIBITIONS

Hawkesbury Regional Gallery & Museum

Ph 4560 4441, closed Tuesday

'Dyarubbin'

29th October - 5th

February

Dyarubbin, the Hawkesbury River has been the spiritual, cultural and physical home to the Dharug



people for millennia. Despite periods of loss and devastation, including the frontier wars from 1794, Dharug people still live and thrive on Dyarubbin. This exhibition shares Dharug stories of Dyarubbin using oral histories, art and Dharug language, empowering us with a greater understanding of this astonishing landscape and its culture.

Art Gallery NSW

Open with Covid conditions.

The Gallery is open every day from 10am to 5pm, and open late until 9pm on Wednesdays.

Purple Noon

606 Terrace Rd, Freemans Reach Ph: 4579 6579

CLOSED: Monday/Tuesday/ Wednesday (by appointment)

OPEN 10:00am - 5:00pm: Thursday/Friday

OPEN 11:00am - 4:00pm: Saturday/Sunday

robyn@purplenoongallery.com.au

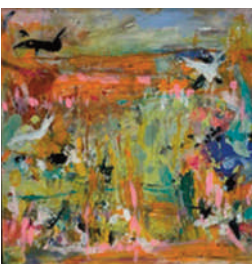
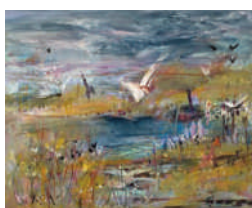
Online trading: 24/7...

and follow @purplenoongallery on Instagram

We have a short break in the exhibition program with the final exhibition for the year opening on Saturday 26th November 2022

'Celebrating Landscape'

This exhibition will be a revolving and evolving exhibition running throughout the summer period December, January, and introducing some of the new Australian artists exhibiting at Purple Noon Gallery



by Rhonda Campbell

The Village Kitchen Kurrajong

83 Old Bells Line of Road Kurrajong Village

Ph:4573 0988

Annmaree Mitchell *'Unframed'* 28th October - 1st December

Renee Mitchell 1st December - 6th January 23



PATONGA BAKEHOUSE GALLERY

THE ART OF JOCELYN MAUGHAN OAM

0417 441 938 - Free help and advice

Email: jocelyn.maughan@yahoo.com.au



Purple Noon Gallery

Beautiful Art, Sculpture & Framing

An enchanting sandstone gallery and garden with a relaxed and rustic ambience.

Contemporary and fine art, sculpture, gifts and jewellery.

Also leaders for all picture framing requirements.

606 Terrace Rd, Freemans Reach 02 4579 6579
purplenoongallery.com.au

Feature Artist of the Month NOVEMBER



SHEILA SHARP

be sure to visit
the Musson Lane Gallery
to view her outstanding work