



LIGHT&SHADE

Monthly Newsletter of the Macquarie Towns Arts Society Inc.

February 2023

Volume 31 Issue 1

THE SOCIETY MEETS ON
2ND TUESDAY OF EACH MONTH

PO Box 1058 Richmond NSW 2753
info@mtas.com.au
www.mtas.com.au

President:	Satya Morrison	0413 809 685
Secretary:	Pat Bakarich	0415 200 446
Treasurer:	Sheilana Prosper	0473 806 946

from the President

Welcome to 2023 with our first Newsletter of the year. I hope you all had a Happy Festive Season, and you made some time to be creative with your art during the break.

We are looking forward to our first Members Meeting on February 14th to see you all and Kristine Ballard with her 'Colour Love' Demonstration.

The Committee worked hard with the help of some of our members to move us out of Musson Lane. Thank you very much to those who helped.

We have not been able to secure a new home as yet and so have moved our essential belongings to storage in South Windsor. The cost of this storage can be covered in the short term by the Society, but will not be a long term answer at all.

MTAS has been without it's own venue before and we will always continue our activities for our members. We will keep using the Deerubbin Center in Windsor and other locations such as the Richmond School of Arts. We have some possibilities for a more permanent home to follow up on and will let you know as we have more information. Cross fingers on one of these working out sooner rather than later!

In light of possible higher costs for a future venue and to help pay for the current storage we will be exploring more activities for the Society, such as pop up exhibitions, markets and other fundraising activities alongside our regular endeavours and exhibitions throughout the year. Stay tuned.

Any suggestions, assistance and donations are always very welcome.

Don't forget to put in your entries for the Royal Easter Show by 8th February and check our MTAS Calendar for the year coming out with this newsletter and on our website.

With the School term going back for our Children's Art Classes, Portrait Group on 11th Feb and our 'Art Group' (used to be Wednesday 'Open Day') which used to gather at Musson Lane now at the Stan Stevens Studio starting 1st & 15th February, among our regular activities, there is lot's to look forward to for our Society this year.

Look forward to seeing you all soon,
Satya

NOTICE TO MEMBERS

The Committee would like to remind all members that they are welcome to attend the monthly Committee Meetings, which are held at 6pm before the monthly Demonstration Meetings in either the John Tebbutt Room or Stan Stevens Room.

Naturally, members attending do not have voting rights.

Should any member have a matter to raise, a question to ask or a suggestion to make, they should come along and speak to the Committee. You will be warmly welcomed. If you would like a copy of Agenda and Minutes, please contact the Secretary.

Please call the Secretary, Pat Bakarich on 0415 200 446, if you have any questions or would like to record your interest to attend a Committee Meeting.

DEMONSTRATION

NEXT MEETING

Tuesday 14th February 2023 7.30pm

Stan Stevens Studio, Deerubbin Centre,
Hawkesbury Cultural Precinct, George St, Windsor

The basement carpark closes at 7.45pm

\$5 entry includes supper

Kristine Ballard 'Colour Love, A passion for colour!' Acrylics

Kristine Ballard's work is driven by colour. Selective colour palettes and disintegrated shapes define the unique style she calls 'Fragmatism' where images float, dissolve and fragment across the canvas, and beauty is often camouflaged.



Deconstructed shape and reconstructed colour is always the focus of her work.

Specialising in still life and landscape paintings, Ballard works at creating the atmospheric colour harmonies inspired by real life experiences.

She has exhibited both nationally and internationally and has completed art residencies at the world renowned Art Students League of New York and also in Venice. In Australia, at Monsalvat and at the Mornington's historic Police Point Residency.

Kristine's artwork has also been licensed for fabric collections art cards.

She is also an experienced art facilitator, having run an Art School for twelve years and been the Arts presenter of EdTV Australia.

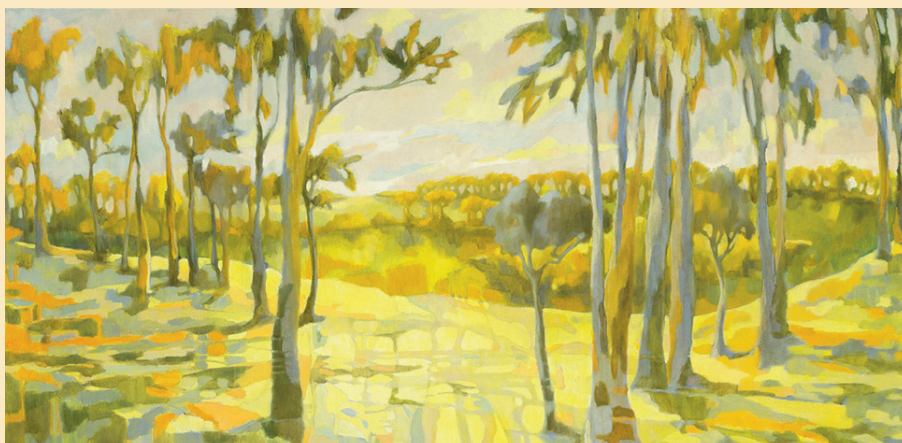
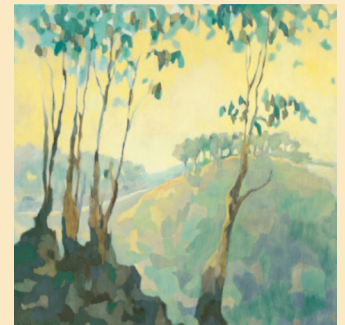
She creates and directs many art functions, workshops, art mentoring programs and art retreats.

She specialises in demystifying the art process and helping students develop their own unique style. To see more of her work, visit:

www.kristineballard.com

www.instagram.com/kristinekb Ballard

www.facebook.com/kristineballardartist



We are adhering to COVID practices.
Mask wearing is optional.

Hawkesbury Community Arts Workshop

K13 has been organised with new drying shelves for the potters, the slab roller and working tables have been moved to better positions all on the upper level. 5 wheels are available, with a glazing area and the kilns on the lower cement floor level.

The printmakers area has been improved by moving Rosa's Special Needs groups products and materials to a new position.

The storeroom has been tidied with better access to the easels.

The new tall table has been repositioned with stools and we still have the 2 tables that wheelchairs can fit under. The 3 large tables used by the Wednesday group, watercolour group, Saturday social group and potters (Stephanie's beginners, Tuesday am and all the Friday groups) are still in position but can be moved for the Thursday pm Life Drawing and the Saturday Portrait group.

We disposed of a lot of excess furniture etc. We are still re arranging the office area.

Classes are all starting and the annual \$50 fee (WSU parking fee, insurance and utilities) is due and Term fees if required.

Enquiries - hcaworkshop@yahoo.com

Hawkesbury Community Arts Workshop PO Box 522, Richmond NSW 2753

CASS REPORT

The Art of Sydney is on! It will be held at the Prince Henry Centre, Little Bay from 23-26 March.
Take-in will be at the Centre on Thursday 23 am - times and more details will be available soon on the CASS website.

We are also organising two workshop weekends in Kandos in October again details available soon.

Cheers,
Kym

FIELD DAY

For venue or information, please ring Tony White 0410 624 918 or NAS website for further information
<http://nepeanartsociety.wildapricot.org/plein-air-painting-group>

FOHacRG Inc.

Committee Meeting 9th February

Contact Margaret Ginnings to book 02 4577 4440.

NEW MEMBERS

A. Luce Andrews Marie Gibbons
Rae-Parker Haines

CLASSES

MTAS CHILDREN'S AFTER SCHOOL ART CLASSES

Teacher Marcella Pyke

Term 1 2023 will resume on

Monday 6th & Wednesday 8th February

**Term fees of \$96 paid via direct deposit to MTAS,
Cash or by Creative Kids Vouchers.**

ENROLMENTS ESSENTIAL

Richmond Art Supplies

328 Windsor St, Richmond (next to Brynorns)

Ph: Deidre 0412 979 731

LIFE DRAWING GROUP

Discontinued this year

Richmond Art Supplies

328 Windsor St, Richmond (next to Brynorns)

Ph: Deidre 0412 979 731

PORTRAIT GROUP

MTAS Portrait Group meets 2nd Saturday each month,
1- 4pm, \$12. Model, easels & afternoon tea provided.

BYO Painting/Drawing materials.

Saturday 11th February, 1-4pm

Richmond Art Supplies

328 Windsor St, Richmond (next to Brynorns)

Ph: Deidre 0412 979 731

MTAS SCHOOL HOLIDAY ART & CRAFT WORKSHOPS

for kids 5 - 15yrs

Monday 9th to Friday 20th January, 2023
Include Drawing, Painting, Pottery, Decorating
Treasure Boxes, Tie Dyed T-shirts, Polymer Clay
Dragons, Jewellery and more.

Cost: \$15 per 2hr class
with COVID safe hygiene practices.

at Richmond Art Supplies
328 Windsor St, Richmond (next to Brynnorms)

BOOKINGS ESSENTIAL

Ph: Deidre 0412 979 731



RICHMOND ART SUPPLIES

5% DISCOUNT FOR MTAS MEMBERS

QUALITY FINE ART MATERIALS
CLASSES & GALLERY
Weekly Classes

- Oils, Drawing, Acrylics Watercolours & Pastels 2hrs \$20
- Friday All media Class 3hrs \$25
- Monthly Art Groups \$10
- Portraits - 2nd Saturday \$12
- Local Artists Gallery \$2 for 4 months 20% commission on painting sales

Deidre Morrison 0412 979 731
Satya Morrison 0405 337 652

328 Windsor St, Richmond
(Next to Brynnorms) 4578 3555



**The largest range of
Art Supplies and framing in
Australia under one roof.**

**With over 17,000
product lines**

For our complete catalogue visit our
web site www.artscene.com.au

Place an order by phone, fax, email or
visit us at (the rear of)
912-914 Victoria Road, West Ryde 2114
Phone 02 9807 6900 Fax 02 9809 6548
email is sales@artscene.com.au



THE PICTURE FRAMING WAREHOUSE
specialising in conservation framing of
all artwork

**•READYMADE FRAMES
AND KITS**

computerised mat cutter for any
intricate mat cutting needs or desires

Ben Baxter

Unit 1, 129 Russell Street,
Emu Plains 2750

Ph: (02) 4735 8021

E: mondtex@gmail.com

Discount for Art Society Members

ArtSup

**Picture Framing
Fine Art Printing
Suppliers of Art
& Graphic Materials**

Cnr Manning Street & Second Ave.,
Kingswood
near University of Western Sydney

Open 5 & 1/2 days

Phone: (02) 4736 5866 Fax: (02) 4736 2640

**Little River
art
Studios**

Bracken Stud. Grose Wold
Artist Workshops

Enjoy a One day or Weekend
workshop with Experienced Art
Tutors on this beautiful,
historical horse property.
Join the mailing list today to find
out who's teaching and when!

Jeanette Starr 0414 761308

www.littleriverartstudios.com.au

brackenstud@iprimus.com.au

FRIDAY ART CLASS

with Deidre Morrison
All media

*Work at your own pace
in relaxed, friendly
atmosphere.*

Every Friday 12.30 - 3.30pm.
\$25 p.w.

Richmond Art Supplies
328 Windsor St, Richmond
Ph: Deidre 0412 979 731

A reminder to members that we do
have a portrait group with a live
model every second Saturday of
the month from 1 - 4 pm, cost
\$12.00.

If anyone would like to come along
feel free to text me on 0412 979
731

If anyone is interested in sitting for
a portrait or would like to suggest a
sitter, please phone Deidre on the
above number.



EXHIBITIONS

Hawkesbury Regional Gallery & Museum

Ph 4560 4441, closed Tuesday

'Mark Dober:

Wollemi'

10th February -

6th April

For his solo

exhibition

Wollemi,

Mark Dober



presents work developed whilst undertaking an residency at BIGCI (Bilpin International Ground for Creative Initiatives) an artistic residency located in the Hawkesbury. Dober's large scale multi-sheet drawings convey a sense of immersion; of being within and enveloped by the environment.

'Untethered fibre Artists'

Signatures investigates the making of a mark – the distinctive pattern, notion or characteristic by which someone or something may be identified. Each artwork rephrases

assumptions and reflects the diversity in approach to artmaking, through the vocabulary of fibre. The exhibition concepts and materiality are explored through installation, wearables and sculpture, enabling critical reflections and thoughtful projections from the artists.



PATONGA BAKEHOUSE GALLERY

THE ART OF JOCELYN MAUGHAN OAM

0417 441 938 - Free help and advice

Email: jocelyn.maughan@yahoo.com.au

Art Gallery NSW

Open with Covid conditions.

Adrian Villar Rojas: The End of Imagination,

3 December 2022 - mid 2023

Purple Noon

606 Terrace Rd, Freemans Reach Ph: 4579 6579

CLOSED: Monday/Tuesday/ Wednesday (by appointment)

OPEN 10:00am - 5:00pm: Thursday/Friday

1:00am - 4:00pm: Saturday/Sunday

robyn@purplenoongallery.com.au

Online trading: 24/7...and follow @purplenoongallery on Instagram

The Village Kitchen Kurrajong

83 Old Bells Line of Road Kurrajong Village

Ph:4573 0988

Purple Noon Gallery

Beautiful Art, Sculpture & Framing

An enchanting sandstone gallery and garden with a relaxed and rustic ambience.

Contemporary and fine art, sculpture, gifts and jewellery.

Also leaders for all picture framing requirements.

606 Terrace Rd, Freemans Reach 02 4579 6579

purplenoongallery.com.au

EXHIBITIONS

From major establishments to small independently run initiatives, Sydney's gallery scene is dynamic and diverse. Permanent and visiting exhibitions give you the work of up-and-coming artists

Museum of Contemporary Art

What's on & coming soon

Primavera 2022, until 12 February 2023

Do Ho Suh, until 26 February 2023

MCA Collection:

Perspectives on Place, until 24 July 2023

The Artery Contemporary Aboriginal Art Gallery in

Darlinghurst specialises in art from remote Aboriginal communities, working with both emerging and established creatives and art centres and specialising in ethical and affordable Aboriginal artworks.

White Rabbit Gallery in Chippendale displays what has become one of the world's most significant collections of Chinese contemporary art.

Shuo Shu, 21 December 2022-14 May 2023

Brett Whiteley Studio

What's on & coming soon:

Eternity is Now, 3 December 2022 - mid 2023

Grace CrossingtonSmithGallery

Grace Crossington Smith Art Award

Exhibition of three winners:

Nadia Hernandez, David Collins, Alice Wormold

Until 25th February

Art North

HSC 2022 Visual Arts from schools in

Hornsby and Ku-ring-gai

4th March to 1st April

Blue Apple Studios

The exhibition showcases works in paint, paper and ceramics reflecting a diversity of creative expression, with each artist portraying a unique interpretation of their subject.

6th to 29th April