



LIGHT&SHADE

Monthly Newsletter of the Macquarie Towns Arts Society Inc.

June 2023

Volume 31 Issue 5

THE SOCIETY MEETS ON
2ND TUESDAY OF EACH MONTH

PO Box 1058 Richmond NSW 2753
info@mtas.com.au
www.mtas.com.au

President:	Satya Morrison	0413 809 685
Secretary:	Pat Bakarich	0415 200 446
Treasurer:	Sheilana Prosper	0473 806 946

from the President

Hello Members,

We have just finished our Annual Autumn Exhibition and what a wonderful event it was.

Thank you to our committee and members who worked tirelessly to have the Exhibition run smoothly. We had good attendance and sales this year. Congratulations to our winners and all who participated.

We are looking forward to our next meeting on the 13th June with Dee Jackson demonstrating Watercolour Portraiture.

Rae Woolnough's Felting Full Day Workshop on 4th of June is almost full. Rae's demonstration was fascinating and the workshop I'm sure will be great.

Our Membership renewal is coming up for the start of financial year 1st July, and please note that at our coming June meeting we have a Special General Meeting at 7.15pm to review our fees with an increase of \$5 which helps us cover costs and be more in line with other Societies around Sydney.

We have some news regarding the Secret Garden as a possible future collaboration for MTAS to be more involved with their events and other opportunities. I am looking forward to pursuing this further. We are still looking towards Skill Share in Richmond as a possibility for a home but no further news there as yet.

Our Wednesday Art Group continues at the Hawkesbury Show Ground and had to move to a different building temporarily. Hopefully back to the Horse Judges building for the coming Art Groups on June 7th and 21st.

Next we look towards our Marketplace Exhibition 17th - 20th August, so a good time to start your artworks, especially smaller works, for that one.

Stay warm and creative everyone,

Satya

NOTICE TO MEMBERS OF A SPECIAL MEETING

A special meeting will be held

prior to the demonstration on

Tuesday, 13th June 2023 at

7.15pm for the purpose of

moving the following motion:

It is proposed that, due to a

general increase in expenses,

Membership fees for the Mac-

quarie Towns Arts Society Inc

be increased by \$5.00 from

1st July 2023.

Fees will be as follows:

Membership \$35 –

Family Membership \$40

Concession Membership \$30 –

Concession Family Membership

\$35

MTAS Art Group

at the new venue 1st & 3rd Wednesday each month.
from 10am – 4pm

Wednesday group new venue.

The Horse Judges Hut at the Hawkesbury showgrounds is the new venue for our 1st & 3rd Wednesday each month.

Enter by Gate 4 (the carpark gate) and drive taking the 3rd road on the right to take you to the far side of the show ring.

The hut is a separate building on the right with some gravel parking. It has a shady verandah with chairs and nearby toilets.

Inside there is air conditioning, fridge, sink, kettle, microwave, tables and chairs.

The HDAA are kindly allowing us to use this for \$2 per head.

If you have any suggestions for a new place for us or could offer any assistance please contact our President Satya at 0483 895 098 or email info@mtas.com.au.



DEMONSTRATION

NEXT MEETING

Tuesday 13th June 2023 7.30pm

Stan Stevens Studio, Deerubbin Centre,
Hawkesbury Cultural Precinct, George St, Windsor

The basement carpark closes at 7.45pm

\$5 entry includes supper

Dee Jackson

Painting a Portrait in Watercolour



Watercolour is Dee's great love. For her, it is the fluid spontaneity that has the attraction. Watercolour, as a medium, lends itself to the softness and curves of the human form. It allows the artist great freedom.

Whenever she creates a portrait, she becomes aware of the almost seamless link we have with our past or future, our hopes, joys, or sorrows. For her, portraiture by its very nature is an intimate experience. Preoccupied as we often are, perhaps from very different backgrounds, there is always a human connection.



For Dee, although each portrait essentially begins the same way – with discussion, planning, sketching, watercolour washes and glazes – ultimately the creation of each portrait is an individual experience.



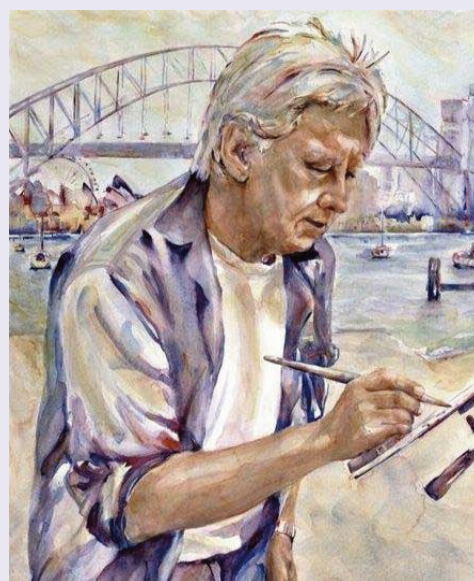
Her portraits have been commissioned throughout Australia, New Zealand, Singapore, South Africa, Sweden, the United Kingdom, the USA, and Vietnam.



You can see more of Dee's work here:

www.deejackson.com.au

www.facebook.com/dee.jackson.portrait.art



You can register your attendance to the Demonstration Meeting on 13th June by email to info@mtas.com.au.

We are adhering to COVID practices.
Mask wearing is optional.

CLASSES

MTAS CHILDREN'S AFTER SCHOOL ART CLASSES

Teacher Marcella Pyke

Term 2 2023 starts on

Monday 1st & Wednesday 3rd May

Term fees of \$96 paid via direct deposit to MTAS,

Cash or by Creative Kids Vouchers.

ENROLMENTS ESSENTIAL

Richmond Art Supplies

328 Windsor St, Richmond (next to Bryn norms)

Ph: Deidre 0412 979 731

PORTRAIT GROUP

MTAS Portrait Group meets 2nd Saturday each month,
1- 4pm, \$15. Model, easels & afternoon tea provided.

BYO Painting/Drawing materials.

Next session Saturday 10th June

Richmond Art Supplies

328 Windsor St, Richmond (next to Bryn norms)

Ph: Deidre 0412 979 731

FOHacRG Inc.

A Bus Trip is proposed for Spring to the Southern Highlands Regional Gallery and Retford Park House and Gardens.

For more information contact Margaret 45774440 or email mingteck@bigpond.com

FIELD DAY

For venue or information, please ring Tony White 0410 624 918 or NAS website for further information <http://nepeanartsociety.wildapricot.org/plein-air-painting-group>

NEW MEMBER

Kim Besso

HAAT

Preparation has begun for an Open Weekend at the end of August.

Raffle won by
yellow ticket F59

CASS REPORT

CASS is also running some workshops in October at Kandos. The October long weekend will be a workshop with watercolourist Jacie Pearson and oil painter Steve Underwood, the 7-9 October will see workshops tutored by Tricia Reust, Tricia Taylor and Chris Seale (and one more as yet not confirmed) and the following weekend 14-16, will be Chan Dissanyake, Herman Pekel, Guy Troughton and Joe Cartwright.

Details about the workshops and bookings will be coming soon.

Art in the Mountains Exhibition at Gallery 188 will be held 29th June to 17th July.

Kym also advised that the Royal Art Society will hold an exhibition on 9th to 27th August of the work of Winners and Placegetters of the Art of Sydney Awards.

Cheers,
Kym



"Art in the Country"

**3 separate weekends of art workshops
with NSW tutors, and tutors from interstate & overseas**

First weekend – 30th September to 2nd October 2023

Tutors – Jacky Pearson (Watercolour) and Steve Underwood (Oil/Acrylic)

Second weekend – 7th October to 9th October 2023

Tutors – Tricia Reust (Mixed Media) – Debra Balloch (Oil)

Tricia Taylor (Pastel) – Chris Seale (Acrylic) – Vivienne McDonald (Watercolour)

Third weekend – 14th October to 16th October 2023

Tutors – Herman Pekel (Acrylic) – Guy Troughton (Watercolour)

Chan Dissanyake (Watercolour) – Joe Cartwright (Watercolour)

DETAILS REGARDING THESE WORKSHOPS

plus, Booking Form and Terms & Conditions

CAN BE FOUND ON THE CASS WEBSITE –

www.combinedartsocieties.com

*Workshops will be held in the Kandos Community Hall
42 Angus Avenue, Kandos*

EXHIBITIONS

From major establishments to small independently run initiatives, Sydney's gallery scene is dynamic and diverse. Permanent and visiting exhibitions give you the work of up-and-coming artists

Museum of Contemporary Art

What's on & coming soon

MCA Collection:

Perspectives on Place, until 24 July 2023

The Artery Contemporary Aboriginal Art Gallery in

Darlinghurst specialises in art from remote Aboriginal communities, working with both emerging and established creatives and art centres and specialising in ethical and affordable Aboriginal artworks.

Brett Whiteley Studio

What's on & coming soon:

Eternity is Now, 3 December 2022 - mid 2023

Carriageworks

245 Wilson Street, Eveleigh NSW (02) 8571 9099

Carriageworks is the largest and most significant contemporary multi-arts centre of its kind in Australia. Carriageworks engages artists and audiences with contemporary ideas and issues. The program is artist led and emerges from Carriageworks' commitment to reflecting social and cultural diversity. The Carriageworks artistic program is ambitious, risk taking, and unrelenting in its support of artists.

Carriageworks is open 10am - 6pm daily

Art2Muse

234 Jersey Rd, Woollahra NSW 2025

Exhibition *Fading Existence II* May – 12 June 2023



RICHMOND ART SUPPLIES

5% DISCOUNT FOR MTAS MEMBERS

QUALITY FINE ART MATERIALS
CLASSES & GALLERY
Weekly Classes

- Oils, Drawing, Acrylics Watercolours & Pastels 2hrs \$25
- Friday All media Class 3hrs \$30
- Portraits - 2nd Saturday \$12
- Local Artists Gallery \$4 for 4 months per painting hanging fee
- 20% commission on painting sales

Deidre Morrison 0412 979 731
Satya Morrison 0405 337 652

328 Windsor St, Richmond
(Next to Brynolds) 4578 3555



**The largest range of
Art Supplies and framing in
Australia under one roof.**

**With over 17,000
product lines**

For our complete catalogue visit our
web site www.artscene.com.au

Place an order by phone, fax, email or
visit us at (the rear of)
912-914 Victoria Road, West Ryde 2114
Phone 02 9807 6900 Fax 02 9809 6548
email is sales@artscene.com.au



THE PICTURE FRAMING WAREHOUSE
specialising in conservation framing of
all artwork

•READYMADE FRAMES AND KITS

computerised mat cutter for any
intricate mat cutting needs or desires

Ben Baxter

Unit 1, 129 Russell Street,
Emu Plains 2750

Ph: (02) 4735 8021

E: mondtext@gmail.com

Discount for Art Society Members

ArtSup

**Picture Framing
Fine Art Printing
Suppliers of Art
& Graphic Materials**

Cnr Manning Street & Second Ave.,
Kingswood
near University of Western Sydney

Open 5 & 1/2 days
Phone: (02) 4736 5866 Fax: (02) 4736 2640

Little River art Studios

Bracken Stud. Grose Wold

Artist Workshops

Enjoy a One day or Weekend
workshop with Experienced Art
Tutors on this beautiful,
historical horse property.
Join the mailing list today to find
out who's teaching and when!

Jeanette Starr 0414 761308

www.littleriverartstudios.com.au
brackenstud@iprimus.com.au

FRIDAY ART CLASS

with Deidre Morrison
All media

Work at your own pace
in relaxed, friendly
atmosphere.

Every Friday 12.30 - 3.30pm.
\$25 p.w.

Richmond Art Supplies
328 Windsor St, Richmond
Ph: Deidre 0412 979 731

Hawkesbury Community Arts Workshop

We have a number of pottery/ceramic classes who use our pottery wheels and kilns at K13. Recently a lovely planter made by one of our potters was the door prize for the MTAS exhibition and 107 small plates were moulded and glazed for a wedding table. Some HCAW potters had displays, and sales at our MTAS exhibition.

Printmaking success for 2 members gaining 1st and 2nd prizes at the Hawkesbury Show and 2 Commended awards at the MTAS exhibition. Also, we have another possible new printmaker who came in to look at our facilities, and the press was used to print an A1 size print which needed the artist and a helper.

If you are interested in any classes or using K13 contact hcaworkshop@yahoo.com.au or call in to K13 on the WSU campus. Enquiries - hcaworkshop@yahoo.com Hawkesbury Community Arts Workshop PO Box 522, Richmond NSW 2753

EXHIBITIONS

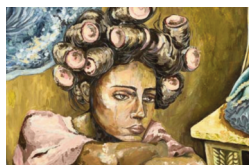
Hawkesbury Regional Gallery & Museum

Ph 4560 4441, closed Tuesday

ArtExpress

ArtExpress is a joint venture of the NSW Education Standards Authority and the NSW Department of Education, managed by the project team at the Arts Unit.

ArtExpress is a series of exciting, dynamic, expressive exhibitions that showcase the considerable creative talent and technical skills of the previous year's Higher School Certificate Visual Arts candidates.



Art Gallery NSW

Open with Covid conditions.

Archibald, Wynne and Sulman Prize exhibition at Art Gallery NSW from May 6th - September 3rd.

Purple Noon

606 Terrace Rd, Freemans Reach Ph: 4579 6579

CLOSED: Monday/Tuesday/ Wednesday (by appointment) OPEN 10:00am - 5:00pm: Thursday/Friday

1:00am - 4:00pm: Saturday/Sunday

robyn@purplenoongallery.com.au

Online trading: 24/7...and follow

@purplenoongallery on Instagram

Hiren Patel - Contemplation: a landscape journey

Hiren's beautiful visual representations provide inspiration - perfectly illustrating what an immense influence the natural beauty around us can have on the imagination of an artist.

Thrilled to be presenting a new collection of oil paintings by Sydney artist Hiren Patel.



PATONGA BAKEHOUSE GALLERY

THE ART OF JOCELYN MAUGHAN OAM

0417 441 938 - Free help and advice

Email: jocelyn.maughan@yahoo.com.au

Purple Noon Gallery

Beautiful Art, Sculpture & Framing

An enchanting sandstone gallery and garden with a relaxed and rustic ambience.

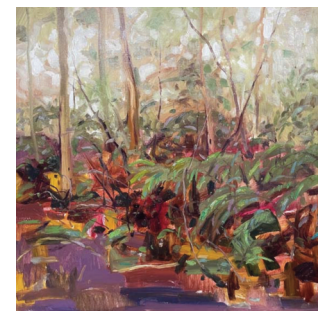
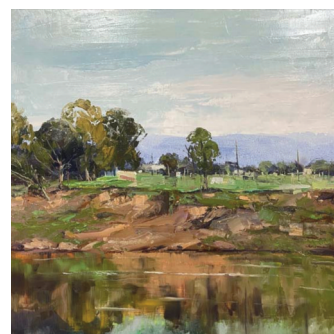
Contemporary and fine art, sculpture, gifts and jewellery.

Also leaders for all picture framing requirements.

606 Terrace Rd, Freemans Reach 02 4579 6579
purplenoongallery.com.au

Do hope that you can join us on Saturday 6:00 PM on the 3rd June to celebrate and meet Hiren at the gallery.

The exhibition will also open online at this time.

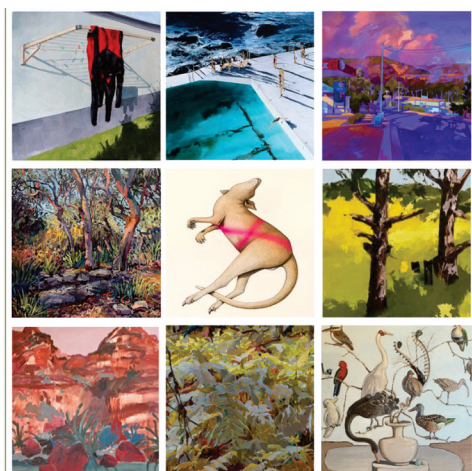



The Village Kitchen Kurrajong

83 Old Bells Line of Road Kurrajong Village

Ph:4573 0988

Jeanelle Gavin 19th may - 23rd June



The 2023 
Hawkesbury Art Prize
www.hawkesburyartprize.com.au

- ▶ \$10,000 1st Prize + Residency
- ▶ 3 Judges - National event
- ▶ Exhibition of finalists 2nd September
- ▶ Entries close 21st July

MTAS AUTUMN EXHIBITION

Best In Show

Gloria Galvin *'Morning Light'*

Oil/Acrylic

1st Gloria Galvin *'Morning Light'*

HC Malcolm Robertson *'The Hanging'*

C Evelyn Cullen *'Peonies'*

C Annmarie Mitchell *'Babbling Brook Tumut'*

C Jim Paciullo *'Swift Parrot'*

C John Sheilds *'Summer Light Hawkesbury'*

Watercolour/Gouache

1st Jeff Eyles *'Pond Reflections'*

HC Gloria Galvin *'Summertime'*

C Deidre Morrison *'Flowers'*

C Jeff Hunter *'Flower Power'*

C Rosalie Neef *'Desert Garden'*

Drawing

1st Jeanette Starr *'Untitled'*

HC Sue Gasser *'In The Shadows'*

C Patricia Latta *'A Mother's Love'*

C Melody Tallon *'Kaleidoscope'*

C Sue Gasser *'The Welcoming Storm'*

Contemporary & Mixed Media

1st Janelle Wymer *'In The Deep'*

HC Kym Morris *'Bush Song'*

C Kym Morris *'Bushwalk 1'*

C Satya Morrison *'Landscape Abstraction'*

C Kathy Shelley *'Generations'*

Printmaking

1st Mark Wilson *'3/5 War & Peace'*

HC Joy Myers Creed *'Like The First Morning'*

C Joan Morrison-Swan *'Kirk'*

C Sheila Sharp *'Starlight'*

Small Paintings

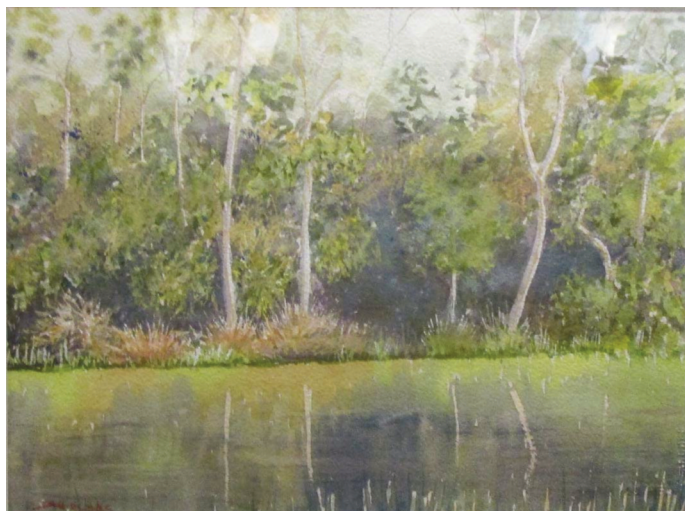
1st Deidre Morrison *'25 Bosworth St, Richmond'*

HC Elaine Foulsham *'Cheeky Sheepy 1'*

C Jeff Eyles *'Sunset'*

C Rosalie Neef *'African Violet'*

C Sheila Sharp *'Pastoral'*



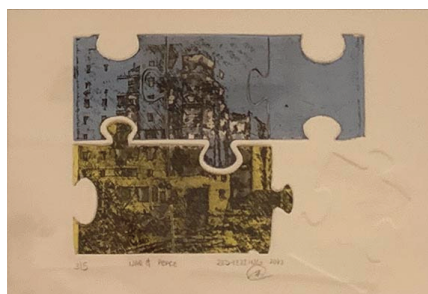
Jeff Eyles *Pond Reflections'*



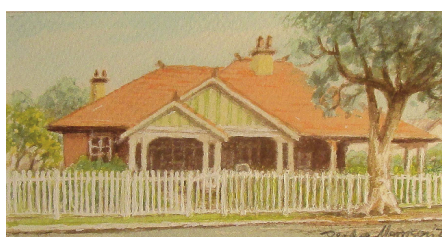
Gloria Galvin *'Morning Light'*



Janelle Wymer
'In The Deep'



Mark Wilson *3/5 War & Peace'*



Deidre Morrison
'25 Bosworth St, Richmond'



Jeanette Starr *'Untitled'*

Deputy Mayor
Barry Calvert
Presenting Awards
on Opening Night



Gloria Galvin,
Deputy Mayor Barry Calvert
and
President Satya Morrison



Janelle Wyman



Jeanette Starr



Deidre Morrison

Our Exhibition
Proudly Sponsored by

Bendigo Bank

Community Bank - North Richmond

**Better banking.
Big impact.**

Find out more. Call us on 4571 2988 or search
Bendigo Bank North Richmond.

Bendigo Bank

Wholly Pty Ltd
ABN 63 615 332 849



Plane Trees Legal

PO BOX 273
RICHMOND NSW 2753
0450 021 978
janna@planetreeslegal.com.au
www.planetreeslegal.com.au



JENNIES CUTTINGEDGE.

Richmond Art Supplies

Art Materials, Art Classes and Gallery in Richmond, NSW



Sheila Sharp